



# Habitats on the farm

## 1

Britain's farmers are working to improve biodiversity in the countryside by changing the ways they manage their land to create and protect a variety of habitats for different birds, mammals and insects.

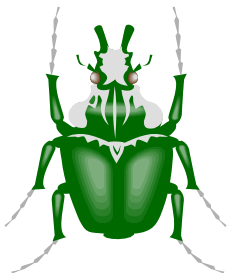
### Field Margins

Why are grassy strips at the edges of fields useful?

<https://www.james-gillies.com/field-margins/>

Which creatures can benefit from strips left at field edges?

<http://www.wildlifetrust.org.uk/urbanwt/ecorecord/bap/html/fields.htm>



<http://www.rspb.org.uk/ourwork/farming/advice/details.aspx?id=204222>

Where is wild bird cover especially useful?

<http://www.rspb.org.uk/ourwork/farming/advice/details.aspx?id=204415>

### Conservation headlands

What are conservation headlands?

<http://www.gwct.org.uk/farming/advice/habitat-issues/conservation-headlands-field-margins/>

How can they benefit wildlife?

<http://www.rspb.org.uk/ourwork/farming/advice/details.aspx?id=204257>

### Beetle banks

What are beetle banks?

<http://adlib.everysite.co.uk/adlib/defra/content.aspx?id=4045>



Which predators can overwinter in beetle banks?

Which plants should farmers sow in a beetle bank and why?

<http://www.gwct.org.uk/farming/advice/sustainable-farming/beetle-banks/>



Turdus merula

### Hedgerows

Which hedges are best for wildlife?

<https://www.wildlifetrusts.org/actions/how-make-hedge-wildlife>

Which farmland birds depend on hedgerows?

[www.rspb.org.uk/ourwork/conservation/advice/farmhedges/value.aspx](http://www.rspb.org.uk/ourwork/conservation/advice/farmhedges/value.aspx)

How should hedges be managed?

[http://www.hedgeline.org.uk/cms/cms\\_content/files/30\\_complete\\_good\\_hedge\\_management\\_guide\\_leaflet.pdf](http://www.hedgeline.org.uk/cms/cms_content/files/30_complete_good_hedge_management_guide_leaflet.pdf)



What are some of the advantages of hedgerows?

<https://businesswales.gov.wales/farmingconnect/posts/benefits-hedgerows-and-trees-agriculture>